



SOLAR "E" Eclipse - 20' x 20'



* Shown with optional monitors and monitor mounts.

PACKAGE	PART	QTY	
Tower with sliding doors	SE-TW		1
Billboard with dye-sub fabric	SE-BB		1
Billboard ceiling with track light	SE-BBC		1
Billboard Kiosk	SE-BBK		2
Kiosk counter	SE-KC		4
Kiosk Halogen Arm Lights (2 per kiosk)			4
Reception counter	SE-RC-01		1
Conference table	SE-CT		1
Solar Flight Case	6FCASE-04		2
Solar Airtub	L-5TUB52		3
Packing Materials and Setup Instruction			1

TOTAL WEIGHT AND MSRP PRICE

3811 lbs

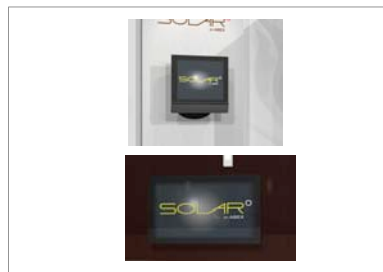
\$35,730.00



OPTIONS	PART	QTY		MSRP PRICE
Sliding Door Replacement Angled Plex Upcharge Ffrosted or milk plex)			1	\$1,293.50



Tower Storage Shelving Three (3) Shelves (plex or laminate)	SE-TWS-01		1	\$487.50
--	-----------	--	---	-----------------



Kiosk Monitor Mount (for small monitor) 19" HD LCD Monitor		13 lbs	1	\$195.00
		30 lbs	1	\$383.50
Tower Monitor Mount (for large monitor) 42" HD LCD Monitor		26 lbs	1	\$383.50
		70 lbs		\$1,293.50

Prices are subject to change without notice.



Solar E 10 x 20 Reconfig Parts	PART	WEIGHT	QTY	MSRP PRICE
Additional Hardware and laminate panels (Monitor and monitor mounts are not included.)		84 lbs	1	\$2,275.00
Fabric Graphic 230.531" W X 86.531" H		12 lbs	1	\$1,813.50
TOTAL NET PRICE (Add-on)				\$4,088.50



COMPONENTS	PART	WEIGHT	QTY	MSRP PRICE
Billboard Kiosk (double-sided; no counter)	SE-BBK	165 lbs	1	\$2,535.00
Solar Flight Case (2' x 3' x 6') (holds up to 2 kiosks / 4 counters per flight case)	6FCASE-02	227 lbs	1	\$1,423.50
TOTAL NET PRICE				\$3,958.50



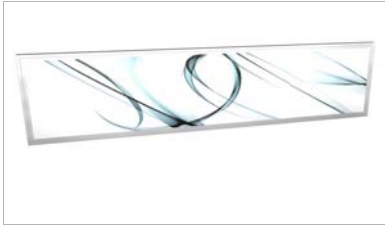
Kiosk Counter	SE-KC	80 lbs	1	\$682.50
Solar Airtub (holds up to 2 kiosks / 4 counters per flight case)	L-5TUB52	231 lbs	1	\$962.00
TOTAL NET PRICE				\$1,644.50



Reception Counter	SE-RC	97 lbs	1	\$715.00
Solar Airtub (up to 2 counters per airtub)	L-5TUB52	231 lbs	1	\$962.00
TOTAL NET PRICE				\$1,677.00



Conference Table Folding Table (Bar Height) 40" H X 30" Round		17 lbs	1	\$318.50
---	--	--------	---	-----------------



REPLACEMENT PARTS	PART	WEIGHT	QTY	MSRP PRICE
Billboard Fabric PER SIDE - 288" W X 60" H		255 lbs	1	\$2,034.50
Printed				
Unprinted			1	\$1,560.00
		227 lbs		



Canopy Mesh Fabric (60" W X 60" H)				
Printed			1	\$325.00
Unprinted			1	\$247.00

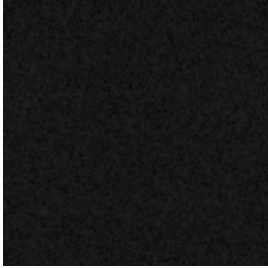


SOLAR PACK	PART	WEIGHT	MSRP PRICE
Solar Flight Case	6FCASE-04	255 lbs	\$1,423.50
Solar Flight Case (small)	6FCASE-03	227 lbs	\$1,423.50



Solar Airtub	L-5TUB52	255 lbs	\$962.00
Solar Halftub	5TUB	153 lbs	\$786.50

12 STANDARD LAMINATE COLOR OPTIONS



Wilsonart 1595-60 Black
(matte finish)



Wilsonart D92-60 Dove Grey
(matte finish)



Wilsonart D354-60 Designer White
(matte finish)



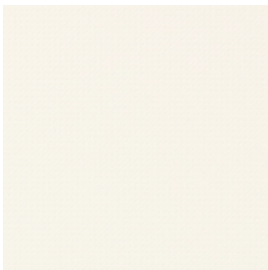
Wilsonart 7911-60 Manitoba Maple



Wilsonart 7949-38 Asian Night



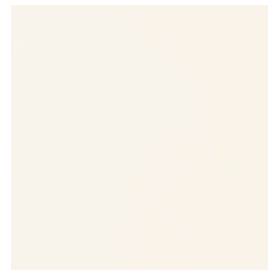
Chemetal 796 Stainless Steel



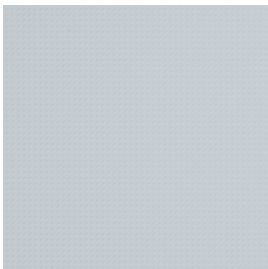
Formica 949-MC White
(Micro Dot Finish)



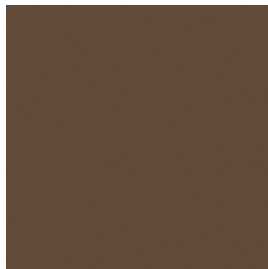
Formica 6904-MC Organic Green
(Micro Dot Finish)



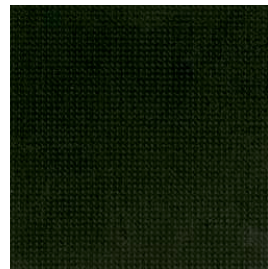
Formica 463-MC Sail White
(Micro Dot Finish)



Formica 1484-MC Steel
(Micro Dot Finish)



Formica 2200-MC Dark Chocolate
(Micro Dot Finish)



Formica 909-MC Black
(Micro Dot Finish)